



Instruction Manual

5-in-1 Toucan Tunes Play Gym



VTech understands that a child's needs and abilities change as they grow and with that in mind we develop our toys to teach and entertain at just the right level...

vtech Baby

Toys that will stimulate their interest in different textures, sounds and colours

I am...

...responding to colours, sounds and textures

...understanding cause and effect

...learning to touch, reach, grasp, sit-up, crawl and toddle

Birth-36 months



Pre-School

Interactive toys to develop their imagination and encourage language development

I want...

...to get ready for school by starting to learn the alphabet and counting

...my learning to be as fun, easy and exciting as can be

...to show my creativity with drawing and music so my whole brain develops

3-6 years



Electronic Learning Computers

Cool, aspirational and inspiring computers for curriculum related learning

I need...

...challenging activities that can keep pace with my growing mind

...intelligent technology that adapts to my level of learning

...National Curriculum based content to support what I'm learning at school

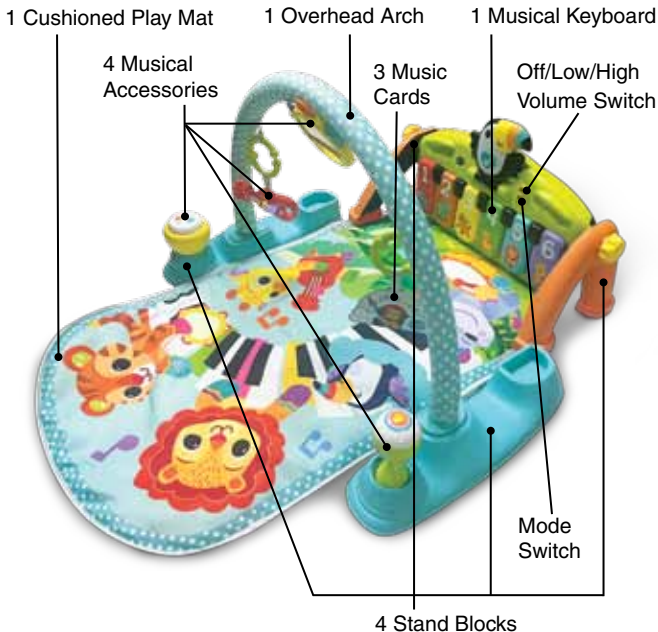
4-10 years



To learn more about this and other VTech® products, visit www.vtech.co.uk

INTRODUCTION

Thank you for purchasing the **5-in-1 Toucan Tunes Play Gym**. The 5-in-1 Toucan Tunes Play Gym is the perfect grow-with-me toy, designed to cater for baby's developmental milestones. Listen and move to the rhythm of Toucan's tuneful music using the familiar musical instrument accessories and take along piano. Discover animals, colours and numbers with each piano key.



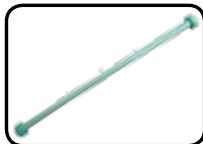
INCLUDED IN THE PACKAGE



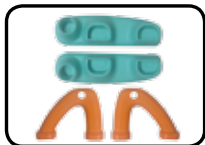
1 Musical Keyboard



1 Cushioned Play Mat



1 Overhead Arch



4 Stand Blocks



2 Detachable Hoops



2 Attachment Tags



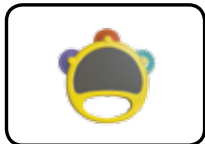
1 Squeaky Drum



1 Maraca



1 Guitar Rattle



1 Tambourine Mirror



3 Music Cards



2 Screw Caps

- Quick Start Guide

WARNING

All packing materials such as tape, plastic sheets, packaging locks, removable tags, cable ties, cords and packaging screws are not part of this toy, and should be discarded for your child's safety.

NOTE

Please save this Instruction Manual as it contains important information.

WARNING

Keep this soft toy out of the sleeping environment for babies under twelve months to avoid suffocation risk.

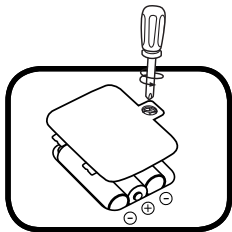
WARNING

Remove product from the Infant Carrier when the vehicle is moving.

GETTING STARTED

Battery Removal and Installation

1. Make sure the unit is turned Off.
2. Find the battery cover located on the back of the Keyboard. Use a screwdriver to loosen the screw, then open the battery cover.
3. Remove old batteries by lifting one end of each battery.
4. Install 3 new AA batteries following the diagram inside the battery box. (For best performance, alkaline batteries or fully charged Ni-MH rechargeable batteries are recommended).
5. Replace the battery cover and tighten the screw to secure.



WARNING:

Adult assembly required for battery installation.
Keep batteries out of reach of children.

IMPORTANT: BATTERY INFORMATION

- Insert batteries with the correct polarity (+ and -).
- Do not mix old and new batteries.
- Do not mix alkaline, standard (carbon-zinc) or rechargeable batteries.
- Only batteries of the same or equivalent type as recommended are to be used.
- Do not short-circuit the supply terminals.
- Remove batteries during long periods of non-use.
- Remove exhausted batteries from the toy.
- Dispose of batteries safely. Do not dispose of batteries in fire.

RECHARGEABLE BATTERIES:

- Remove rechargeable batteries (if removable) from toy before charging.
- Rechargeable batteries are only to be charged under adult supervision.
- Do not charge non-rechargeable batteries.

Disposal of batteries and product



The crossed-out wheeled bin symbols on products and batteries, or on their respective packaging, indicates they must not be disposed of in domestic waste as they contain substances that can be damaging to the environment and human health.



The chemical symbols Hg, Cd or Pb, where marked, indicate that the battery contains more than the specified value of mercury (Hg), cadmium (Cd) or lead (Pb) set out in the Batteries and Accumulators Regulation.

The solid bar indicates that the product was placed on the market after 13th August, 2005.

Please dispose of your product and batteries responsibly.

In the UK, give this toy a second life by disposing of it at a small electricals collection point* so all of its materials can be recycled.

Learn more at:

www.vtech.co.uk/recycle

www.vtech.com.au/sustainability

* Visit www.recyclenow.com to see a list of collection points near you.

ASSEMBLY INSTRUCTIONS

With the **VTech® 5-in-1 Toucan Tunes Play Gym**, safety comes first. To ensure your child's safety, adult assembly is required. For your child's safety, do not let your child play with the toy until it is fully assembled.

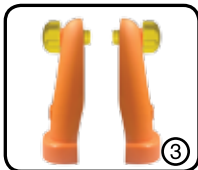
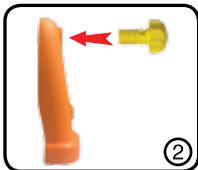
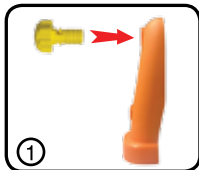
Gym Assembly

Musical Keyboard assembly

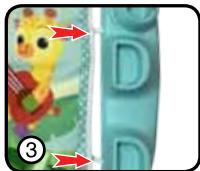
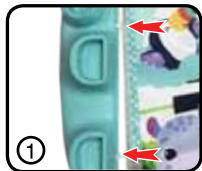


1. Insert the Screw Caps into the orange side of the orange Stand Blocks until you hear a click.

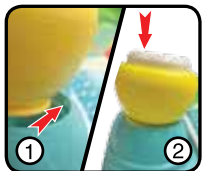
Note: After installation, the Screw Caps and the orange Stand Blocks cannot be separated.



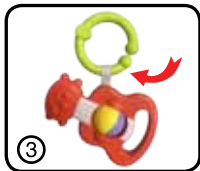
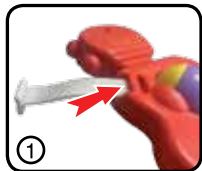
1. Feed the two Attachment Tags on the Play Mat through the slots on the blue Stand Blocks.



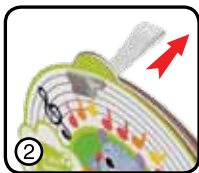
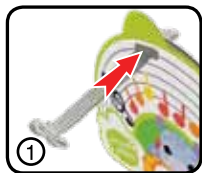
2. Press the Squeaky Drum into a circular compartment of the blue Stand Block until it clicks. Press the Maraca into the other circular compartment.



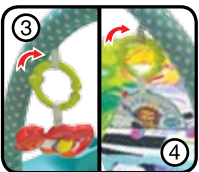
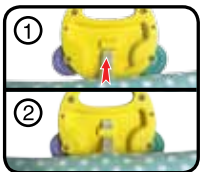
3. Pull the smooth end of an Attachment Tag through the slot on the back of the Guitar Rattle. Thread a Detachable Hoop through the loop to hang.



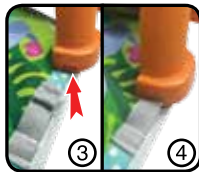
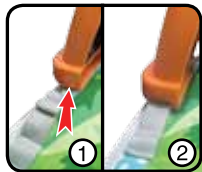
4. Stack three Music Cards together neatly, then thread the smooth end of an Attachment Tag through the holes. Thread a Detachable Hoop through the loop to hang.



5. Find the Attachment Tag which is connected to the centre of the Overhead Arch. Thread through the slot on the back of the Tambourine Mirror until it is securely fastened. Then, insert the Overhead Arch into the two central compartments of the blue Stand Blocks.



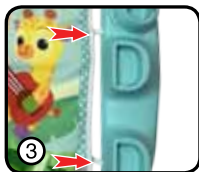
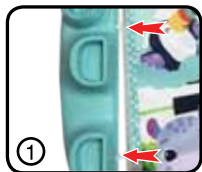
6. Find the two larger Attachment Tags connected to the Play Mat. Thread these through the slots on the orange Stand Blocks. Pull the Tags outwards to complete the installation.



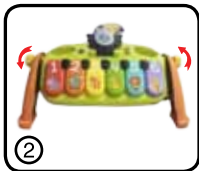
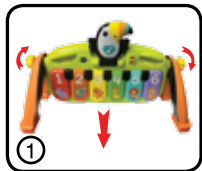
Tummy Time Play



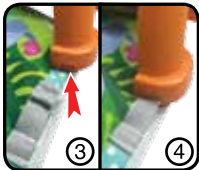
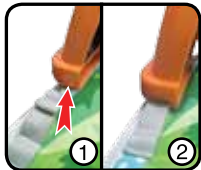
1. Feed the two Attachment Tags on the Play Mat through the slots on the blue Stand Blocks.



2. Loosen the screws on both sides of the orange Stand Blocks. Adjust the angle of the Keyboard to a diagonal slant. Tighten the screw caps to secure.



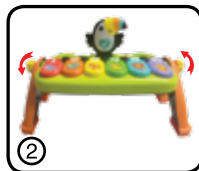
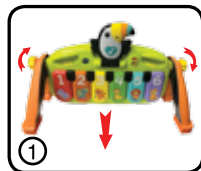
3. Find the two larger Attachment Tags connected to the Play Mat. Thread these through the slots on the orange Stand Blocks. Pull the Tags outwards to complete the installation.



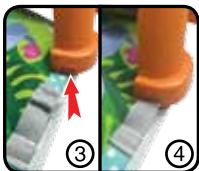
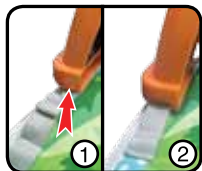
Sit & Play



1. Loosen the screws on both sides of the orange Stand Blocks and adjust the Keyboard to a horizontal angle. Tighten the screw caps to secure.



2. Find the two larger Attachment Tags connected to the Play Mat. Thread these through the slots on the orange Stand Blocks. Pull the Tags outwards to complete the installation.



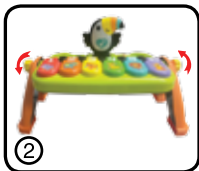
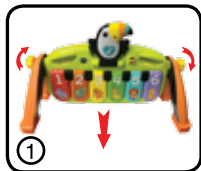
3. Insert the Tambourine Mirror, Music Cards and Guitar Rattle into the compartments on the Musical Keyboard.



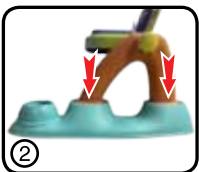
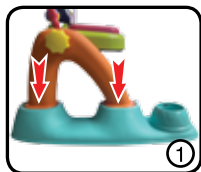
Music Station Play



1. Loosen the screws on both sides of the orange Stand Blocks and adjust the Keyboard to a horizontal angle. Tighten the screw caps to secure.



2. Insert the orange Stand Blocks into the compartments of the blue Stand Blocks.






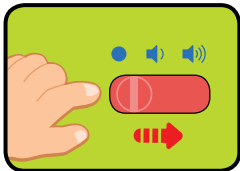
3. Press the Squeaky Drum and Maraca into the circular compartments on the front of the blue Stand Blocks. Insert the remaining Musical Accessories into the compartments on the Keyboard.



PRODUCT FEATURES

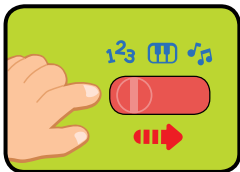
1. Off / Low / High Volume Switch

To turn the unit **On**, slide the **Off / Low / High Volume Switch** to the **Low / High** ( / ) position. You will hear an opening tune, phrases and a playful song. To turn the unit **Off**, slide the **Off / Low / High volume Switch** to the **Off** () position.



2. Mode Switch

Slide the Mode Switch to Music Mode, Play Along Mode or Learn Mode position.



3. Automatic Shut-Off

To preserve battery life, the **5-in-1 Toucan Tunes Play Gym** will automatically shut off after approximately 30 seconds without input. The unit can be turned on again by pressing any button.

NOTE

If the unit powers down or if the light fades out during play, please install a new set of batteries.

ACTIVITIES

1. Piano Buttons

Press the Piano Buttons to hear fun sounds, songs and melodies in Music Mode. Learn about animals, their sounds, numbers and colours in Learn Mode. Play the piano in Play Along Mode and follow the colourful notes on the Music Cards to play a short tune. The lights on Toucan's Tummy will change following the rhythm of the music.



MELODY LIST

1. A-Tisket, A-Tasket
2. Old King Cole
3. Row, Row, Row Your Boat
4. Jack Be Nimble
5. Hickory Dickory Dock
6. Little Boy Blue
7. The Green Grass Grew All Around
8. London Bridge
9. Oh Dear! What Can the Matter Be?
10. Lazy Mary, Will You Get Up?
11. Incy Wincy Spider
12. Mary Had a Little Lamb
13. The Alphabet Song
14. Are You Sleeping?

SONG LYRICS

Song 1

Hello friend, it's play time!
The animals are ready.
They run and they roar,
They stomp and they sing,
We'll have fun together!

Song 2

Hippo likes to splash and play,
Swimming in the pond all day.

Song 3

Stomping here, stomping there,
Elephant marches everywhere.

Song 4

Tiger's in the jungle, hear her roar.
Bounding through the trees, ready to play.

Song 5

Giraffe is tall, standing so high,
Giraffe can reach up to the sky.

Song 6

Lion is brave, lion is strong,
He plays in the grass all day long.

Song 7

Bear is cute and furry,
Bear likes to snack on honey.

CARE & MAINTENANCE

1. Keep the unit clean by wiping it with a slightly damp cloth.
2. Keep the unit out of direct sunlight and away from any direct heat sources.
3. Remove the batteries if the unit will not be in use for an extended period of time.
4. Do not drop the unit on hard surfaces and do not expose the unit to moisture or water.

TROUBLESHOOTING

If for some reason the program/activity stops working or malfunctions, please follow these steps:

1. Please turn the unit **Off**.
2. Interrupt the power supply by removing the batteries.
3. Let the unit stand for a few minutes, then replace the batteries.
4. Turn the unit **On**. The unit should now be ready to play with again.
5. If the unit still does not work, install a new set of batteries.

If the problem persists, please contact our Consumer Services Department and a service representative will be happy to help you

CONSUMER SERVICES

Creating and developing **VTech®** products is accompanied by a responsibility that we at **VTech®** take very seriously. We make every effort to ensure the accuracy of the information, which forms the value of our products. However, errors sometimes can occur. It is important for you to know that we stand behind our products and encourage you to call our Consumer Services Department with any problems and/or suggestions that you might have. A service representative will be happy to help you.

UK Customers:

Phone: 0330 678 0149 (from UK) or +44 330 678 0149 (outside UK)
Website: www.vtech.co.uk/support

Australian Customers:

Phone: 1800 862 155
Website: support.vtech.com.au

NZ Customers:

Phone: 0800 400 785
Website: support.vtech.com.au

PRODUCT WARRANTY/ CONSUMER GUARANTEES

UK Customers:

Read our complete warranty policy online at vtech.co.uk/warranty.

Australian Customers:

**VTECH ELECTRONICS (AUSTRALIA) PTY LIMITED –
CONSUMER GUARANTEES**

Under the Australian Consumer Law, a number of consumer guarantees apply to goods and services supplied by VTech Electronics (Australia) Pty Limited. Please refer to vtech.com.au/consumerguarantees for further information.

**Visit our website for more
information about our products,
downloads, resources and more.**

www.vtech.co.uk
www.vtech.com.au

